

Quick Start

1. Install the E/Server

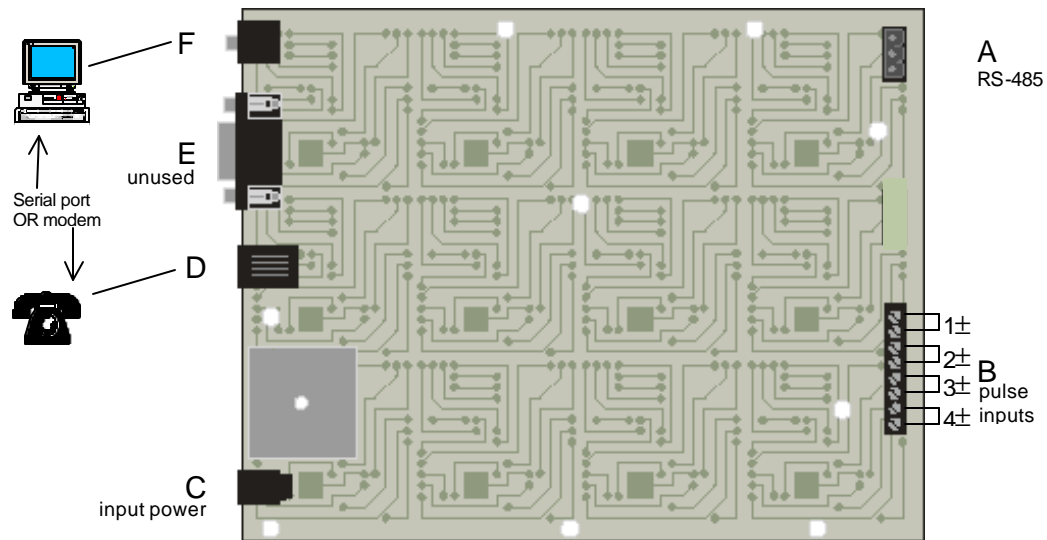
Follow steps starting with “Hardware: Installing” (page 1).

- Remove the E/Server cover
- Install the E/Server to a wall or other appropriate surface, and install peripherals

2. Connect External Components

Follow steps starting with “Connect Pulse Inputs to System Board” (page 2).

- Connect RS-485 devices and up to four pulse inputs to the system board
- Connect peripherals and cables



- A. RS-485 connector
- B. Pulse inputs (+); minus (-) terminals are connected to the system board ground and the chassis (commons)
- C. Power connector
- D. Telephone connector
- E. RS-232 connector (**unused; do not connect devices here**)
- F. Local connector to your PC's serial port

3. Install E/Server Software on your PC

Follow steps starting with “Software: Installing and Using” (page 4).

4. Add or Edit an E/Server Definition through the Setup Dialog

Follow steps starting with “Using E/Server Software on a PC” (page 5). The main options are:

- Connect your PC to an E/Server via modem* or your PC's serial port
- Enter an E/Server's name, phone number, and call scheduling information
- Define download information (to an ASCII text file or ODBC-compliant database)
- Configure data points
- Assign/Change Names for Modbus Devices and Pulse-Input Accumulators
- Zero Pulse-Input Accumulators and kWh Energy-Consumption Accumulators

* The PC's modem must be connected to a serial port. The E/Server does not support a Winmodem.